

**LA
MAISON**
by **FENDI CASA**

SANTA MARÍA GOLF & COUNTRY CLUB

FENDI



OUT OF ITALY'S RICH CULTURAL HERITAGE AND LOVE FOR EXOTIC ELEGANCE

emerged the iconic brand Fendi that has successfully established itself to be a true epitome of everything that luxury fashion stands for.



**“LUXURY IS
FREEDOM OF
SPIRIT”**

KARL LAGERFELD



FENDI

CASA

Since 1989, Fendi Casa has been creating furniture and prestigious design objects that bring the unique Fendi flavour into homes all over the world. A pervasive lifestyle project where tradition is never nostalgic and innovation is paramount. The collection contains a large variety of home furnishings, decorative lighting and accessories, all designed and manufactured using the finest materials and exclusive finishes. The production is 90% handcrafted by Italian artisans using traditional techniques in Italy.

The high-level design, showcased on a multi-faceted and fluid stage, reveals a sophisticated art de vivre, translating into aliving philosophy. Sofas, armchairs, tables, beds and exquisitely finished objects, resulting from a meticulous design and high- level craftsmanship, naturally adapt to the surrounding context. Fendi Casa introduces a new dimension of exclusivity and glamour. Excellence and comfort highlight the sofas crafted traditionally using prized materials and leathers adorned with exclusive buckles, stitching and embroidery. Several FENDI references are included in the design that impactfully comes back with a new, expressive and unique motif. Fendi Casa's spaces epitomize comfort utilizing premium leathers and fabrics and inviting designs.





SANTA MARIA GOLF & COUNTRY CLUB

Located in Santa María Golf & Country Club, La Maison is located in the most prestigious residential area of Panama surrounded by a spectacular golf course with 18 holes designed by Jack Nicklaus Design.





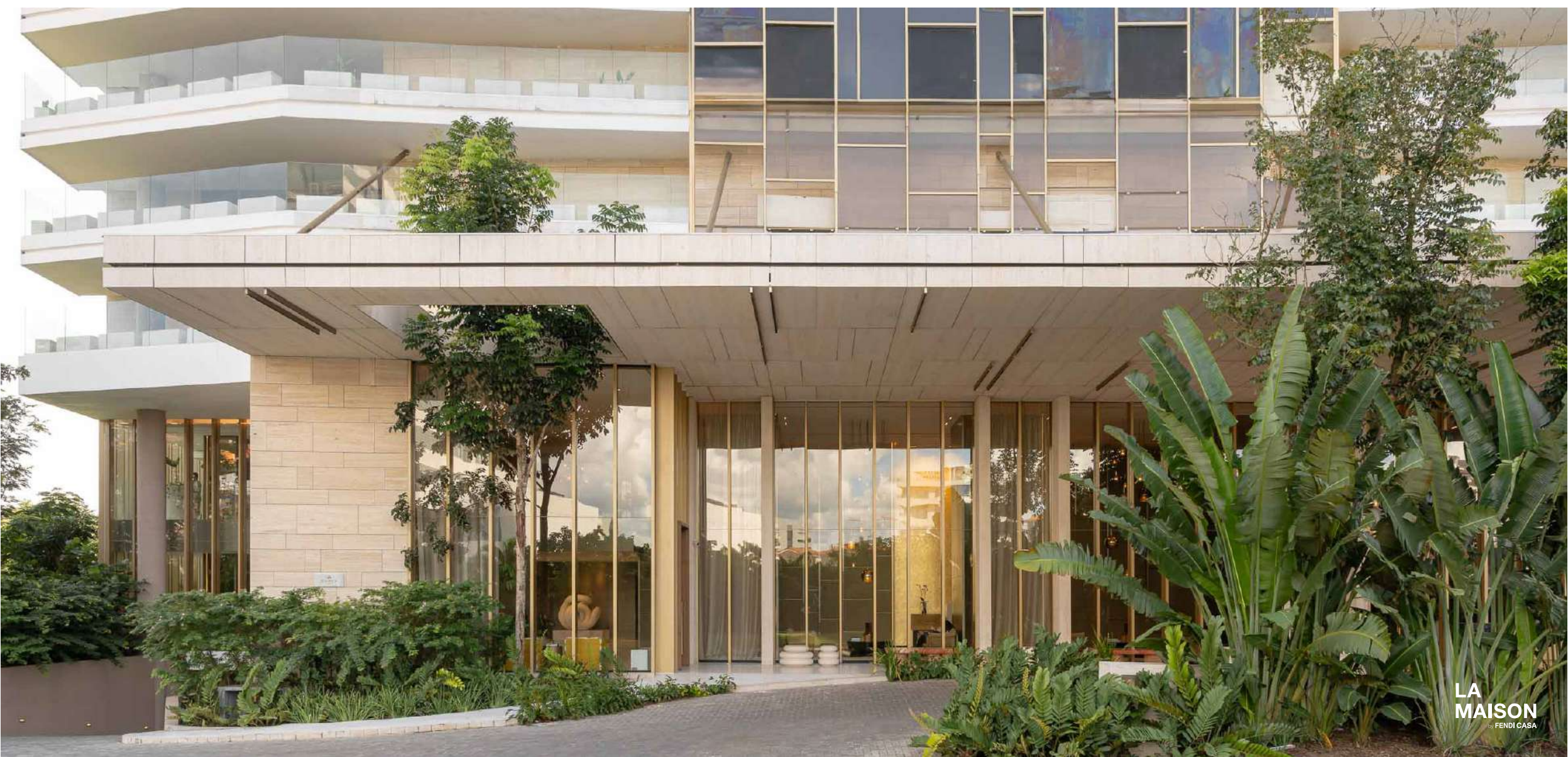
MASTERFULLY DESIGNED FOR LIVING A WORLD-CLASS LIFESTYLE

A singular structure so unique and breathtaking, that passersby are compelled to stop and take it all in. The technology, the design aesthetic and the innovation that went into its creation are truly representative of where architecture is heading in the 21st century.

AN EXCEPTIONAL LIFE



A WORLD OF ARTISTRY, LUXURY AND CHOICE





MASTER LOBBY

LA
MAISON
by FENDI CASA







FEATURES & AMENITIES

BUILDING INFORMATION

- 61-story tower
- 97 residential units
- 5 parking levels
- 3 levels of Amenities
- 7 high-speed elevators
- Floor to ceiling windows
- 360° view of the sea and the city
- Spacious balconies and terraces
- Italian kitchen fendi design

BUILDING AMENITIES & SERVICES

- Concierge service
- Valet Parking
- Pool - drink service
- Golf court
- Squash court
- Boxing ring
- Poker room
- Gym & Spa, bar and sensory shower
- Hydromassage pool
- Tea room
- Recording studio
- Private restaurant
- Special areas for children

EXPERIENCE THE
WORLD'S FINEST
DREAMED AMENITIES

PERFECT SPACES DESIGNED
TO BE LIVED AND LOVED



OUTDOOR LIVING

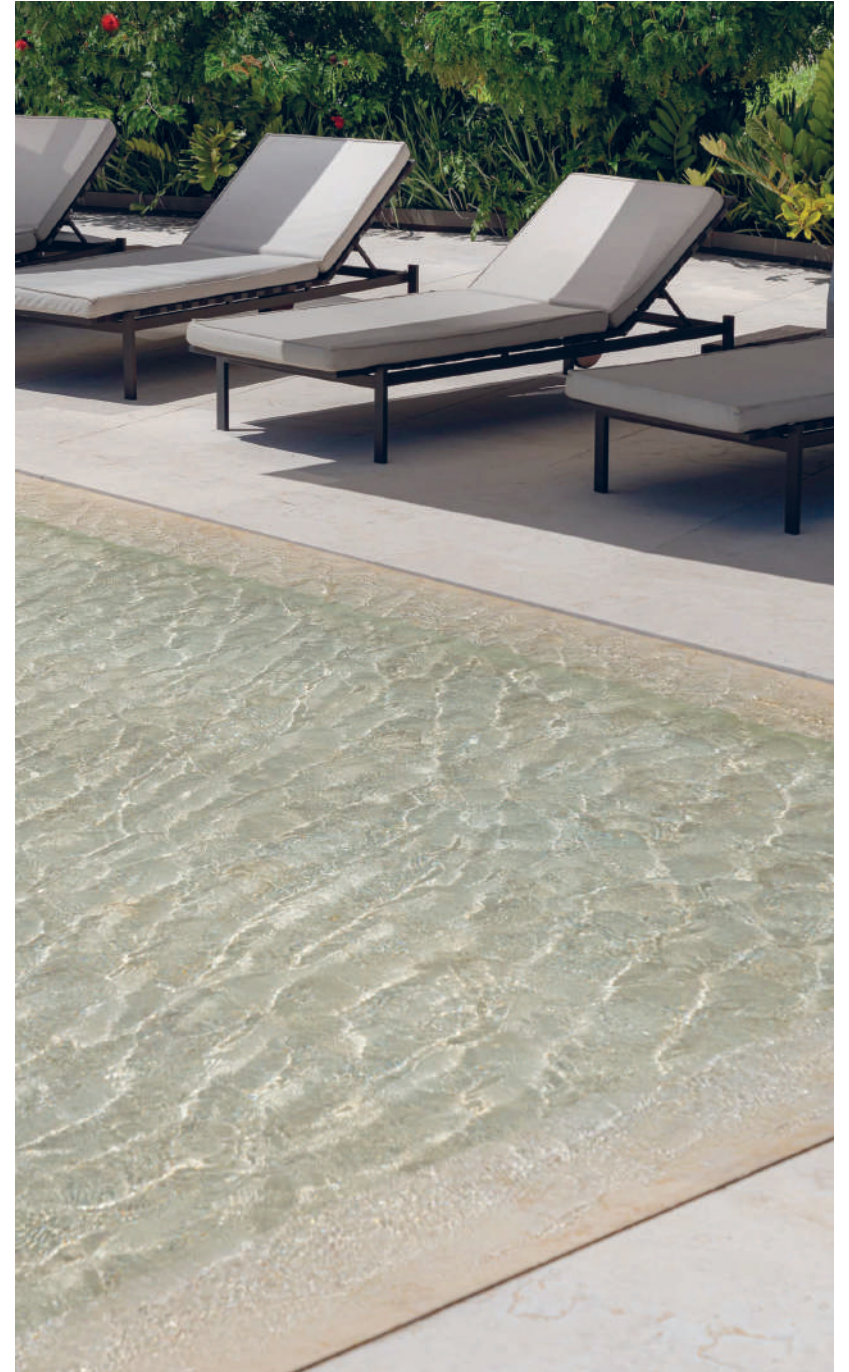
LA
MAISON
by FENDI CASA





SWIM ABOVE IT ALL





COZY AND COMFORTING

A full complement of amenities such as a state-of-the-art fitness centre and spa, large pool deck, tea room and living rooms.







GYM · SQUASH COURT

LA
MAISON
by FENDI CASA







INDOOR CHILDREN'S AREA



OUTDOOR CHILDREN'S AREA

LA
MAISON
by FENDI CASA



CINEMA ROOM



RECORDING STUDIO

LA
MAISON
by FENDI CASA



GAME ROOM

LA
MAISON
by FENDI CASA



BOXING RING

THE NEXT *TOP-LEVEL*
OF EXPERIENCE

A FENDI RESTAURANT



5-STAR CONCIERGE
SERVICES, PROVIDING
COMPLETE LIVING
EXPERIENCES FOR
RESIDENTS.



DESTINED FOR LIVING LIFE BEAUTIFULLY

Open your mind to the endless possibilities.

An exciting world of sophistication,
meticulously designed, and crafted by
artisans using the most noble materials.



LIVING ROOM AND TERRACE



LIVING ROOM AND DINING ROOM





SECONDARY LIVING ROOM



FOCUSING ON THE
DETAILS IS KEY, BECAUSE
THEY ARE THE ONE THAT
COMPLEMENTS THE
STYLE AND EXCLUSIVITY.

EXQUISITE AND TOP-OF-THE LINE KITCHEN



A PRESTIGIOUS HOME,
WHERE NO DETAIL HAS
BEEN LEFT TO CHANCE IN A
RELENTLESS PASSION TO
CREATE TRUE BEAUTY.



KITCHEN / VANITIES FINISHES



/ 01
BRUSHED BRONZE
/ Handle



/ 02
BRONZE CARTIER
/ Undertop profile
and Baseboard



/ 03
FIOR DI PESCO CÁRNICO (MARBLE)
/ Counter top and
backsplash



/ 04
THASSOS (MARBLE)
/ Flooring



/ 05
GLOSSY
LACQUERED WHITE
/ Wall cabinet



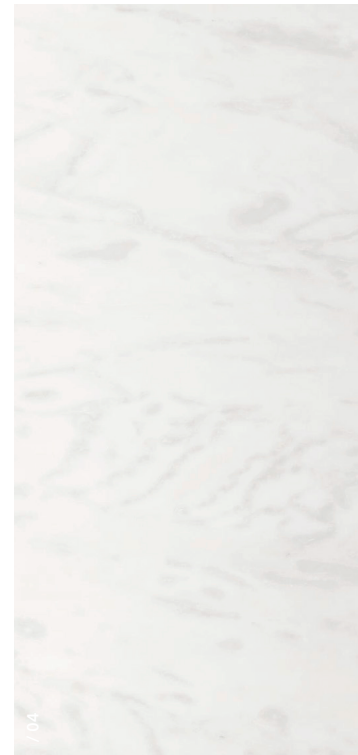
/ 06
MIRROR
/ Back wall cabinet



/ 07
CLEAR GLASS
/ Fire top



/ 08
GREIGE
/ Internal drawers



SOPHISTICATED STYLE USING THE MOST NOBLE MATERIALS

Spacious and naturally bright interiors have been meticulously designed, inspired by a love of true beauty. Each habitat creates the perfect ambience for the most comfortable and elegant living and for enjoying the panoramic views of Santa Maria and the city's impressive skyline.







WALK-IN CLOSETS / CLOSETS FINISHES

/01
MELAMINE EFFECT
WALNUT WOOD
/ Structures,
Shelves, drawers,
chest of drawers.

/02
BRONZE CARTIER
/ Frame door

/03
TORTORA
/ Door closet

/04
ALCANTARA
/ Upholstery on the
drawers unit

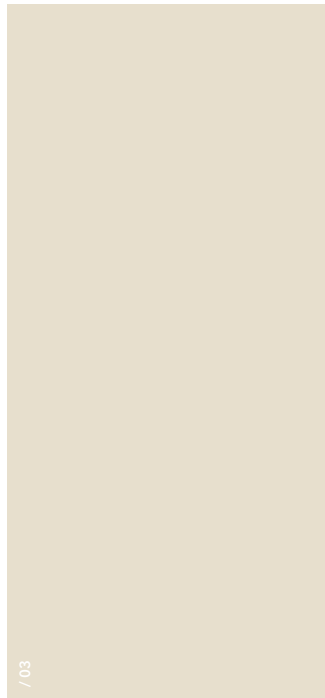
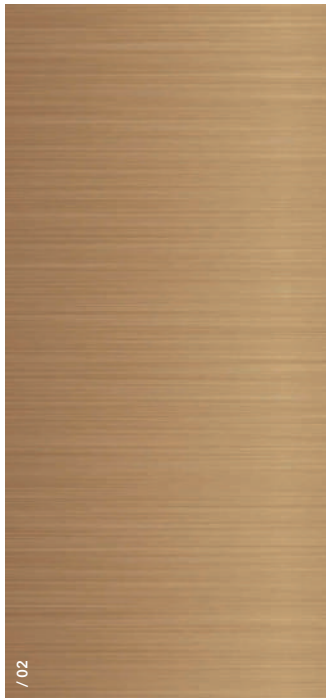
/05
MELAMINE CREME
LEATHER EFFECT
/ Closet back panel

/06
BRONZE GLASS
/ Door closet

/07
MELAMINE BROWN
METAL PRINTED
LEATHER EFFECT
/ WIC Back panel

/08
ALUMINUM
MOKA COLOUR
/ Hanging bar

/09
ATLANTIC WHITE
/ Flooring



BATHROOMS FINISHES

/01
POLISHED BRONZE
/ Faucets

/02
BRONZE CARTIER
/ Vanity legs

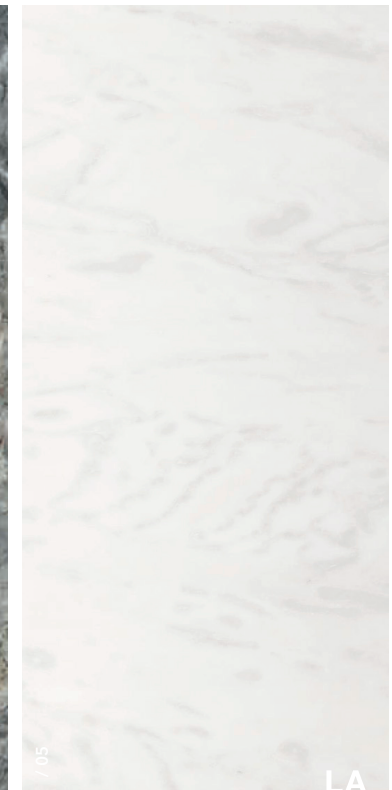
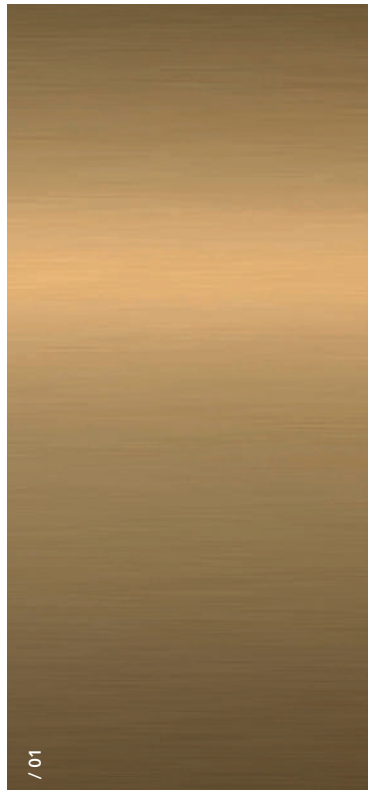
/03
MELAMINE EFFECT
WALNUT WOOD
/ Vanity structure

/04
FIOR DI PESCO
CARNICO
/ wall finishing,
top vanity

/05
THASSOS (MARBLE)
/ wall finishing,
/ Flooring

/06
MIRROR
/ Vanity mirror

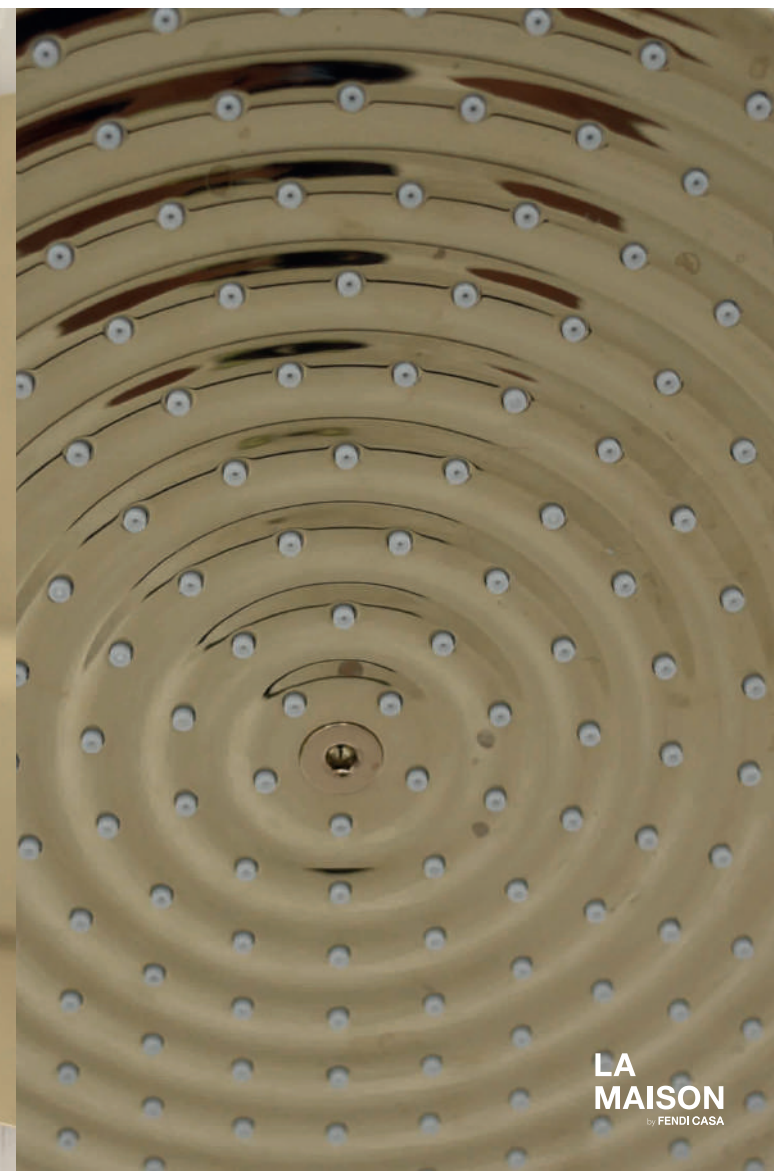
/07
CLEAR GLASS
/ Shower





THE BEAUTY IN THE DETAILS

FAUCETS



THE BUILDING

Every aspect of the La Maison by Fendi has been carefully considered to provide the perfect balance between maximisation of space, optimal light and views, and the needs of today's modern cosmopolitan lifestyles. Additionally, all amenities within and adjacent to the building have been positioned for maximum convenience and accessibility.



LA MAISON

by FENDI



KEYPLAN

LOUNGE FLOOR

GROUND LEVEL

**LA
MAISON**
by FENDI



ALL PLANS, FEATURES AND AMENITIES DEPICTED HEREIN ARE BASED UPON PRELIMINARY DEVELOPMENT PLANS, AND ARE SUBJECT TO CHANGE WITHOUT NOTICE IN THE MANNER PROVIDED IN THE OFFERING DOCUMENTS. NO GUARANTEES OR REPRESENTATIONS WHATSOEVER ARE MADE THAT ANY PLANS, FEATURES, AMENITIES OR FACILITIES WILL BE PROVIDED OR, IF PROVIDED, WILL BE OF THE SAME TYPE, SIZE, LOCATION OR NATURE AS DEPICTED OR DESCRIBED HEREIN. THE SKETCHES, RENDERINGS, GRAPHIC MATERIALS, PLANS, SPECIFICATIONS, TERMS, CONDITIONS AND STATEMENTS CONTAINED IN THIS BROCHURE ARE PROPOSED ONLY, AND THE DEVELOPER RESERVES THE RIGHT TO MODIFY, REVISE OR WITHDRAW ANY OR ALL OF THE SAME IN ITS SOLE DISCRETION AND WITHOUT PRIOR NOTICE. ALL IMPROVEMENTS, DESIGNS AND CONSTRUCTION ARE SUBJECT TO FIRST OBTAINING THE APPROPRIATE FEDERAL, STATE AND LOCAL PERMITS AND APPROVALS FOR SAME. THESE DRAWINGS AND DEPICTIONS ARE CONCEPTUAL ONLY AND ARE FOR THE CONVENIENCE OF REFERENCE. THEY SHOULD NOT BE RELIED UPON AS REPRESENTATIONS, EXPRESS OR IMPLIED, OF THE FINISH DETAILS OF THE RESIDENCES. THE DEVELOPER EXPRESSLY RESERVES THE RIGHT TO MAKE MODIFICATIONS, REVISIONS AND CHANGES IT DEEMES DESIRABLE IN ITS SOLE AND ABSOLUTE DISCRETION.

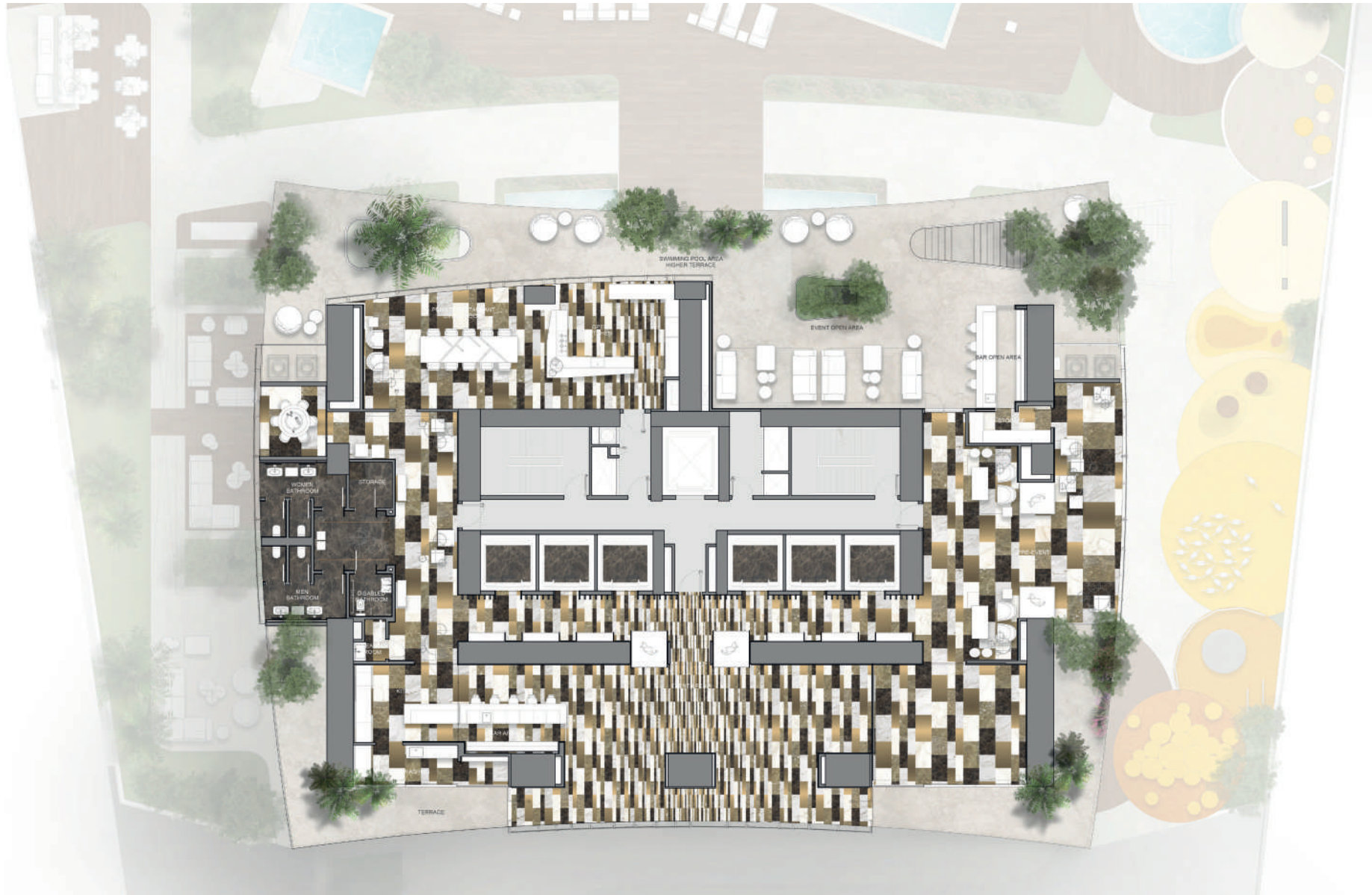




KEYPLAN

FENDI THEMATIC FLOOR

**LA
MAISON**
by FENDI



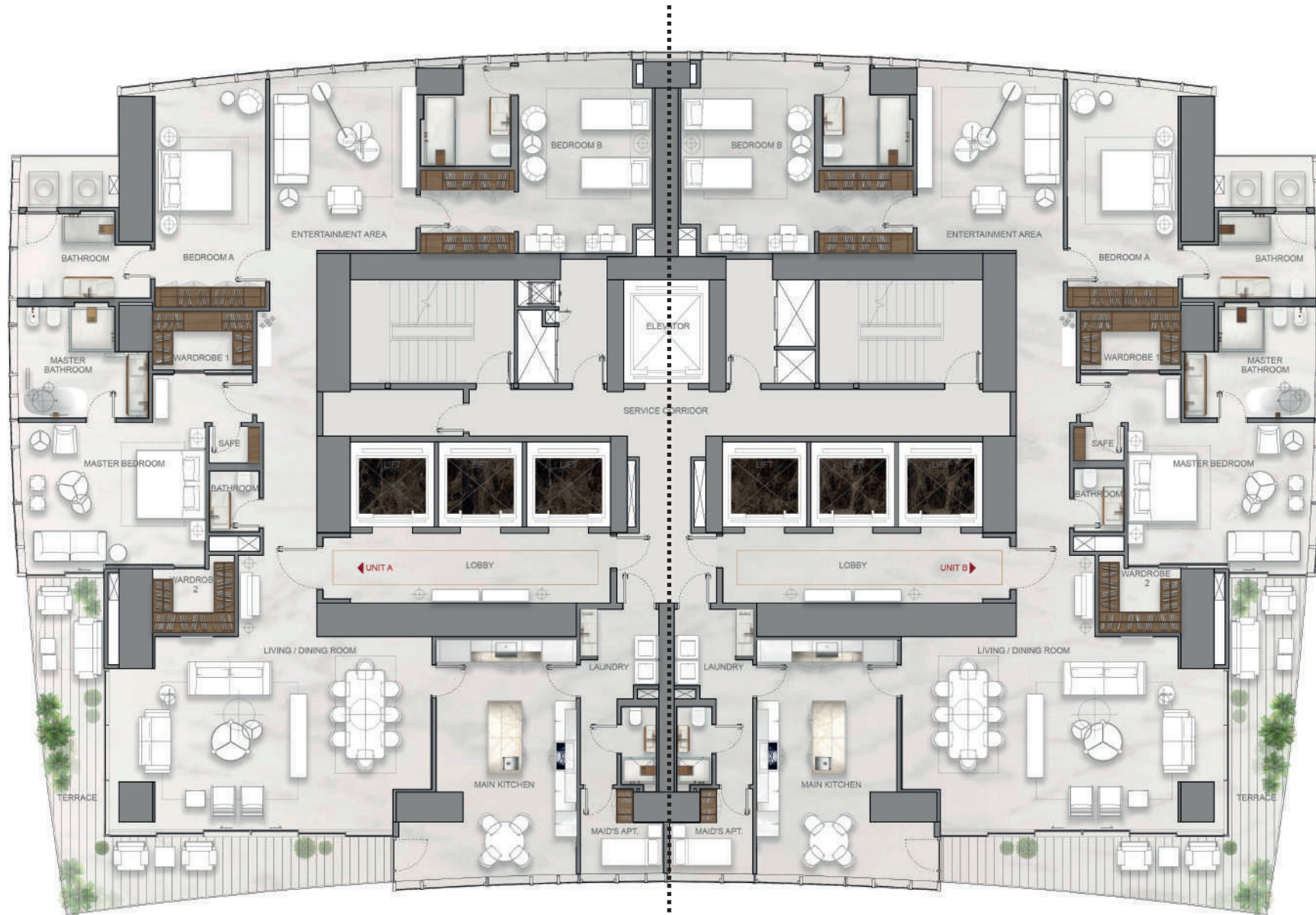
ALL PLANS, FEATURES AND AMENITIES DEPICTED HEREIN ARE BASED UPON PRELIMINARY DEVELOPMENT PLANS, AND ARE SUBJECT TO CHANGE WITHOUT NOTICE IN THE MANNER PROVIDED IN THE OFFERING DOCUMENTS. NO GUARANTEES OR REPRESENTATIONS WHATSOEVER ARE MADE THAT ANY PLANS, FEATURES, AMENITIES OR FACILITIES WILL BE PROVIDED OR, IF PROVIDED, WILL BE OF THE SAME TYPE, SIZE, LOCATION OR NATURE AS DEPICTED OR DESCRIBED HEREIN. THE SKETCHES, RENDERINGS, GRAPHIC MATERIALS, PLANS, SPECIFICATIONS, TERMS, CONDITIONS AND STATEMENTS CONTAINED IN THIS BROCHURE ARE PROPOSED ONLY, AND THE DEVELOPER RESERVES THE RIGHT TO MODIFY, REVISE OR WITHDRAW ANY OR ALL OF THE SAME IN ITS SOLE DISCRETION AND WITHOUT PRIOR NOTICE. ALL IMPROVEMENTS, DESIGNS AND CONSTRUCTION ARE SUBJECT TO FIRST OBTAINING THE APPROPRIATE FEDERAL, STATE AND LOCAL PERMITS AND APPROVALS FOR SAME. THESE DRAWINGS AND DEPICTIONS ARE CONCEPTUAL ONLY AND ARE FOR THE CONVENIENCE OF REFERENCE. THEY SHOULD NOT BE RELIED UPON AS REPRESENTATIONS, EXPRESS OR IMPLIED, OF THE FINISH DETAILS OF THE RESIDENCES. THE DEVELOPER EXPRESSLY RESERVES THE RIGHT TO MAKE MODIFICATIONS, REVISIONS AND CHANGES IT DEEMS DESIRABLE IN ITS SOLE AND ABSOLUTE DISCRETION.

APARTMENTS

MODEL A | B

LA
MAISON
by FENDI

Unit A
397 m²
· 3 bedrooms
· 3.5 baths



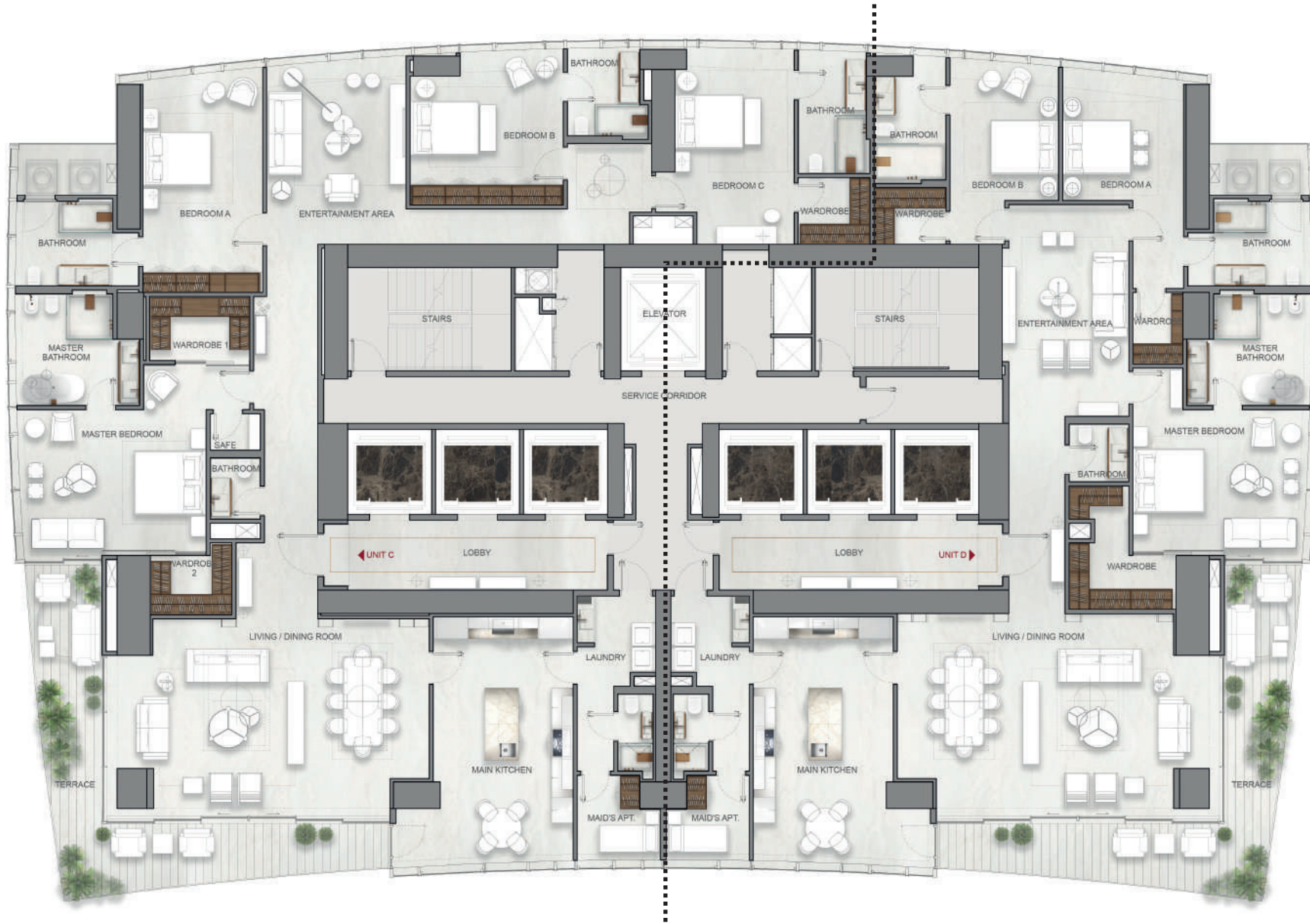
Unit B
397 m²
· 3 bedrooms
· 3.5 baths

ALL PLANS, FEATURES AND AMENITIES DEPICTED HEREIN ARE BASED UPON PRELIMINARY DEVELOPMENT PLANS, AND ARE SUBJECT TO CHANGE WITHOUT NOTICE IN THE MANNER PROVIDED IN THE OFFERING DOCUMENTS. NO GUARANTEES OR REPRESENTATIONS WHATSOEVER ARE MADE THAT ANY PLANS, FEATURES, AMENITIES OR FACILITIES WILL BE PROVIDED OR, IF PROVIDED, WILL BE OF THE SAME TYPE, SIZE, LOCATION OR NATURE AS DEPICTED OR DESCRIBED HEREIN. THE SKETCHES, RENDERINGS, GRAPHIC MATERIALS, PLANS, SPECIFICATIONS, TERMS, CONDITIONS AND STATEMENTS CONTAINED IN THIS BROCHURE ARE PROPOSED ONLY, AND THE DEVELOPER RESERVES THE RIGHT TO MODIFY, REVISE OR WITHDRAW ANY OR ALL OF THE SAME IN ITS SOLE DISCRETION AND WITHOUT PRIOR NOTICE. ALL IMPROVEMENTS, DESIGNS AND CONSTRUCTION ARE SUBJECT TO FIRST OBTAINING THE APPROPRIATE FEDERAL, STATE AND LOCAL PERMITS AND APPROVALS FOR SAME. THESE DRAWINGS AND DEPICTIONS ARE CONCEPTUAL ONLY AND ARE FOR THE CONVENIENCE OF REFERENCE. THEY SHOULD NOT BE RELIED UPON AS REPRESENTATIONS, EXPRESS OR IMPLIED, OF THE FINISHED DESIGN OF THE RESIDENCES. THE DEVELOPER EXPRESSLY RESERVES THE RIGHT TO MAKE MODIFICATIONS, REVISIONS AND CHANGES IT DEEMS DESIRABLE IN ITS SOLE AND ABSOLUTE DISCRETION.

MODEL C | D

Unit C

- 437 m²
- 4 bedrooms
- 4.5 baths



Unit D

- 357 m²
- 3 bedrooms
- 3.5 baths

THE
PETNHOUSE
 851.75 m²

**LA
 MAISON**
 by FENDI



ALL PLANS, FEATURES AND AMENITIES DEPICTED HEREIN ARE BASED UPON PRELIMINARY DEVELOPMENT PLANS, AND ARE SUBJECT TO CHANGE WITHOUT NOTICE IN THE MANNER PROVIDED IN THE OFFERING DOCUMENTS. NO GUARANTEES OR REPRESENTATIONS WHATSOEVER ARE MADE THAT ANY PLANS, FEATURES, AMENITIES OR FACILITIES WILL BE PROVIDED OR, IF PROVIDED, WILL BE OF THE SAME TYPE, SIZE, LOCATION OR NATURE AS DEPICTED OR DESCRIBED HEREIN. THE SKETCHES, RENDERINGS, GRAPHIC MATERIALS, PLANS, SPECIFICATIONS, TERMS, CONDITIONS AND STATEMENTS CONTAINED IN THIS BROCHURE ARE PROPOSED ONLY, AND THE DEVELOPER RESERVES THE RIGHT TO MODIFY, REVISE OR WITHDRAW ANY OR ALL OF THE SAME IN ITS SOLE DISCRETION AND WITHOUT PRIOR NOTICE. ALL IMPROVEMENTS, DESIGNS AND CONSTRUCTION ARE SUBJECT TO FIRST OBTAINING THE APPROPRIATE FEDERAL, STATE AND LOCAL PERMITS AND APPROVALS FOR SAME. THESE DRAWINGS AND DEPICTIONS ARE CONCEPTUAL ONLY AND ARE FOR THE CONVENIENCE OF REFERENCE. THEY SHOULD NOT BE RELIED UPON AS REPRESENTATIONS, EXPRESS OR IMPLIED, OF THE FINAL DETAIL OF THE RESIDENCES. THE DEVELOPER EXPRESSLY RESERVES THE RIGHT TO MAKE MODIFICATIONS, REVISIONS AND CHANGES IT DEEMS DESIRABLE IN ITS SOLE AND ABSOLUTE DISCRETION.

LA MAISON

lamaison.com.pa

by **FENDI**



DUREX

PROPERTY GROUP

